



**F003**

**Description**

The series F003 is a low cost flow switch installed in line with the fluid movement to monitor flow rates up to 50 GPM. The compact and durable design allows for ease of installation and the removable bonnet assembly provides easy access for cleaning without removal from the process pipe. The F003 is available in a bronze body with a Teflon® shuttle mechanism and connection sizes from 3/4" NPT to 2" NPT.

**Principle of Operation:**

A spring loaded teflon shuttle magnet is vertically displaced by liquid flow moving through the valve chamber between the inlet and outlet ports. The magnet actuates a hermetically sealed reed switch element inside the housing stem.

**Key Features**

- In-line mounting
- Horizontal or vertical mount
- Low pressure drop
- SPDT switch type
- Single fixed set point
- Easy access to internal shuttle
- Fixed set-points to 50 GPM

**Applications**

- Lubricant Flow Monitoring
- Coolant Flow Monitoring
- Chillers
- Cooling Towers

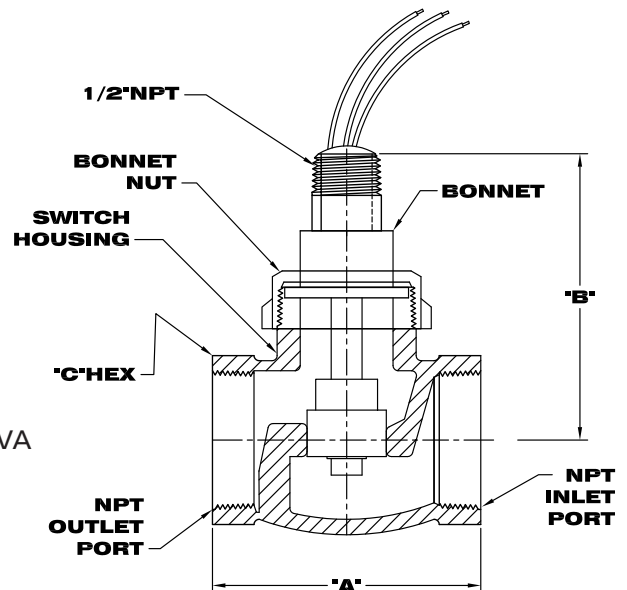


**Environmental**

- Process Temperature: Bronze/Teflon®  
-20° to +300° F  
(-28° to +148° C)
- Process Pressure: 400 psig @ +100° F  
(27 bar @ +37° C)

**Electrical**

- Output: SPDT 20 and 100 VA



Specifications					
Model	Port Size NPT	"A" Inch	"B" Inch	"C" Hex Inch	Max. Flow
F003-05	3/4"	3"	3"	1 13/32	12 GPM
F003-06	1"	3 1/4"	3"	1 25/32	15 GPM
F003-09	2"	5 3/8"	4"	3 3/32	50 GPM

Bulletin: IS-312.0  
Effective: December 2009

Teflon is a registered trademark of DuPont.