



L190S

Key Features

- Buna-N or stainless floats
- Fully-shielded movement
- Universal side mounting
- SPST or SPDT switches

Applications

- Sumps
- Mobile Tanks
- Wells
- Bilges
- Storage Tanks

Environmental

- Process Temperature: -40° to +140° F (-40° to +60° C)
- Process Pressure: 150 psig (10 bar)

Electrical

- Output: SPST 50 & 100 VA SPDT 20 & 100 VA



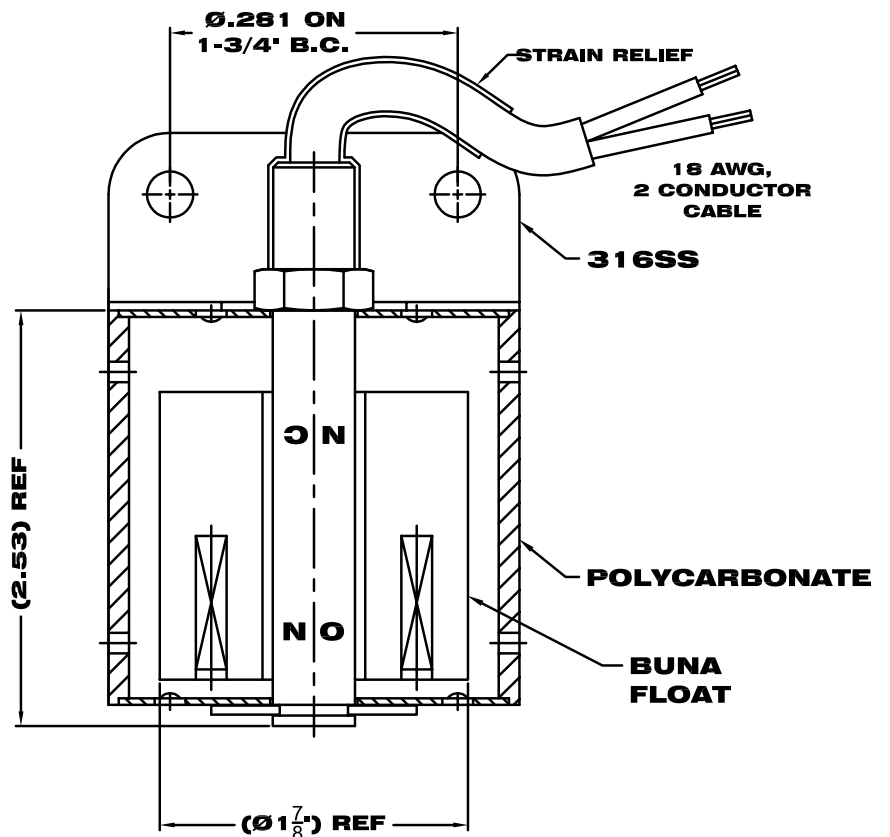
Description

The L190S shielded liquid level switch provides accurate and stable level detection in turbulent and highly contaminated non-static liquids. A clear polycarbonate sash shield minimizes the effect of tank motion and turbulence and helps prevent particle interference.

Ideal for use in oil or water, the L190S is the perfect solution for wells, sumps, mobile tanks, filtration systems, or any application where moving liquid or heavy particulates exist.

Principle of Operation

A hermetically sealed reed switch is actuated by a magnet inside the float. As the float rises and falls, the magnet causes the switch to either open or close.



Specifications						
Series	Mounting Material	Float Material	Specific Gravity	Temperature	Pressure	Part Number
L190	316 Stainless Steel	Buna	.65	-40° to +180° F	150 psig	L190-4508-2003
	316 Stainless Steel	316 Stainless Steel	.75	-40° to +300° F	150 psig	L190-4508-0803

SG refers to recommended minimum liquid specific gravity

Bulletin: IS-160.0
Effective: December 2009